

GENERAL PUMP*A member of the Interpump Group*

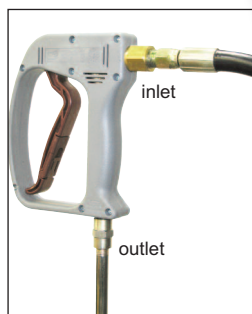
DCG5010HE

Compensating Spray Gun for Hydro Excavation

SPECIFICATIONS

Part Number:	DCG5010HE	
Maximum Volume:	10.5 GPM	
Maximum Pressure:	5000 PSI	
Maximum Temperature:	320° F	
Port Sizes:	Inlet Outlet	3/8" NPT-F 1/4" NPT-F
Dimensions:	8.1" x 6.3" x 1.2"	
Weight:	1.4 lbs.	
Material:	Brass, Stainless Steel, Plastic, Viton	

REPAIR KIT	2100249
-------------------	----------------

**FEATURES**

- Specifically designed for use in hydro excavation!
- Exclusive patented GP design
- Unique design compensates for changes in pressure
- Trigger designed for low fatigue
- Allows for continued use without tiring hand
- All flow passages designed for minimum pressure drop - maximum flow
- Fluorocarbon seals for maximum high temperature performance
- Large comfortable hand grip to accommodate work gloves
- Additional venting for excellent high temperature performance
- Durable glass-filled housing and trigger in Zytel (high tech nylon)



General Pump
is a member of
the Interpump Group



Ref 300990 Rev A
02-16



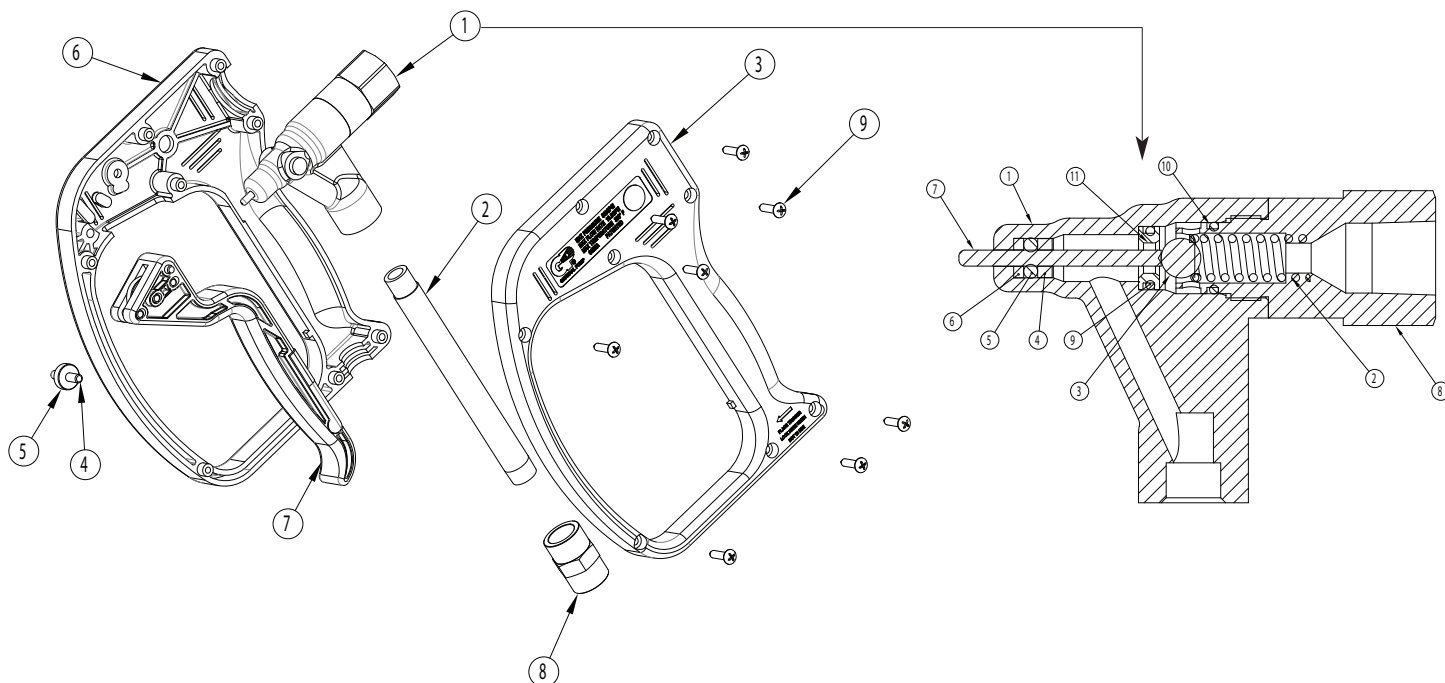
DCG5010HE

Compensating Spray Gun

GENERAL PUMP

A member of the Interpump Group

PARTS LIST



PARTS LIST FOR 2103290

Item	Part No.	Description	Qty.				
1	2103290	ASSY, SUB, FORGING	1	1	2452024	FORGING	1
2	2550201	TUBE, INLET, GUN	1	2*	2720001	SPRING	1
3	2660323	HOUSING, GUN, LEFT	1	3*	2520004	BALL	1
4	2510157	PIN, TRIGGER	1	4*	2510004	WASHER, BRASS	1
5	2520087	ROLLER	1	5*	2701048	O-RING	1
6	2660322	HOUSING, GUN, RIGHT	1	6*	2710018	WASHER, TEFLON	1
7	2103255	ASSY, TRIGGER	1	7*	2520084	PIN, FORGING	1
8	2520060	UNION	1	8	2510251	PLUG, GUN	1
9	2200065	SCREW	8	9*	2701002	O-RING	1
				10*	2701049	O-RING	1
				11*	2520085	SEAT, GUN	1
				*	2100249	REPAIR KIT	

Item Part No. Description Qty.

* Repair Kit 2100249



Ref 300990 Rev A
02-16

GENERAL PUMP • 1174 Northland Drive • Mendota Heights, MN 55120

Phone: 651.686.2199 • Fax: 800.535.1745 • email: sales@gpcompanies.com • www.generalpump.com

